

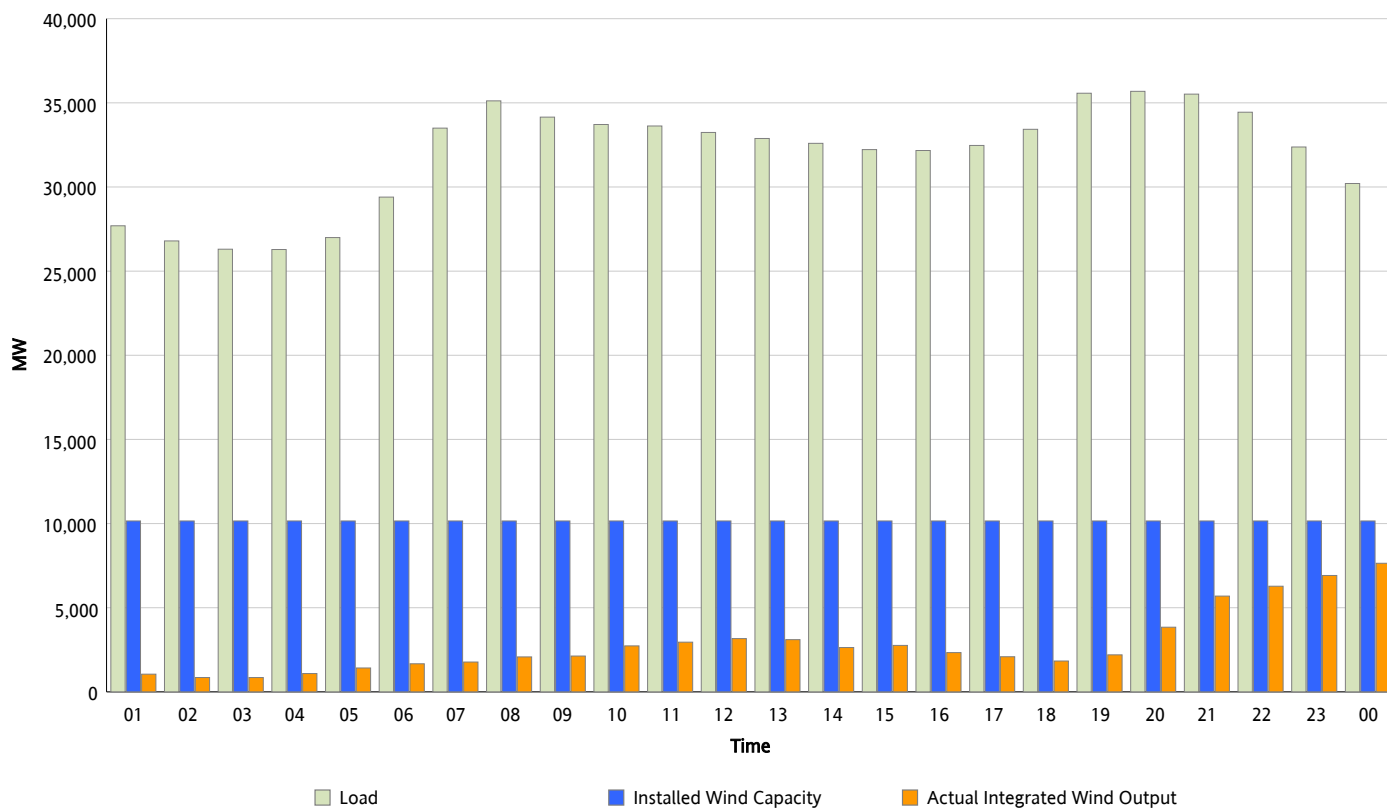


ERCOT Grid Operations

Wind Integration Report : 01/10/2013

Peak Load	35,684 MW
Load Peak Hour (HE)	20
Wind Over Peak	3,843 MW
Wind Record 12/25/12	8,638 MW
Max Wind Value*	7,778 MW
Wind Peak Time	23:37
Wind Integration %	26.01 %

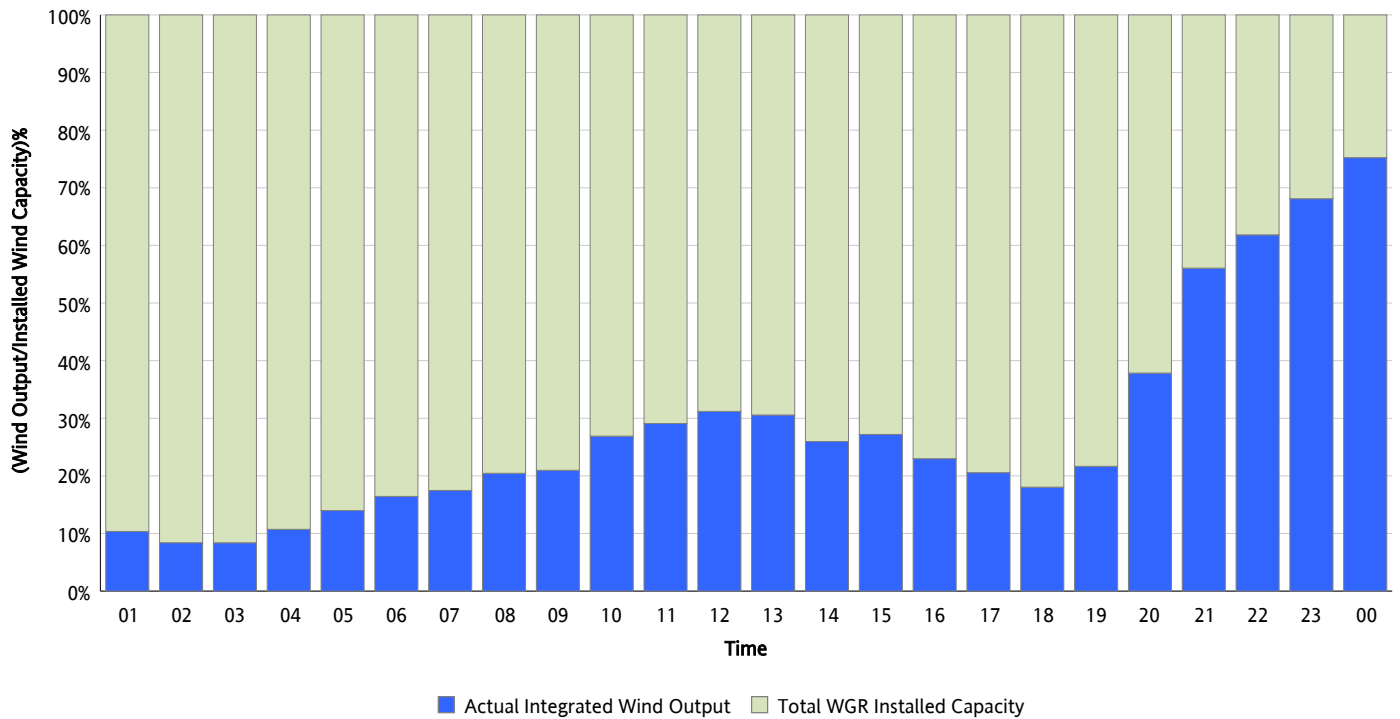
Hourly Average Actual Load vs. Actual Wind Output
01/10/2013



** Wind Record and Wind Max represent instantaneous values and the rest of the values are integrated over the hour*

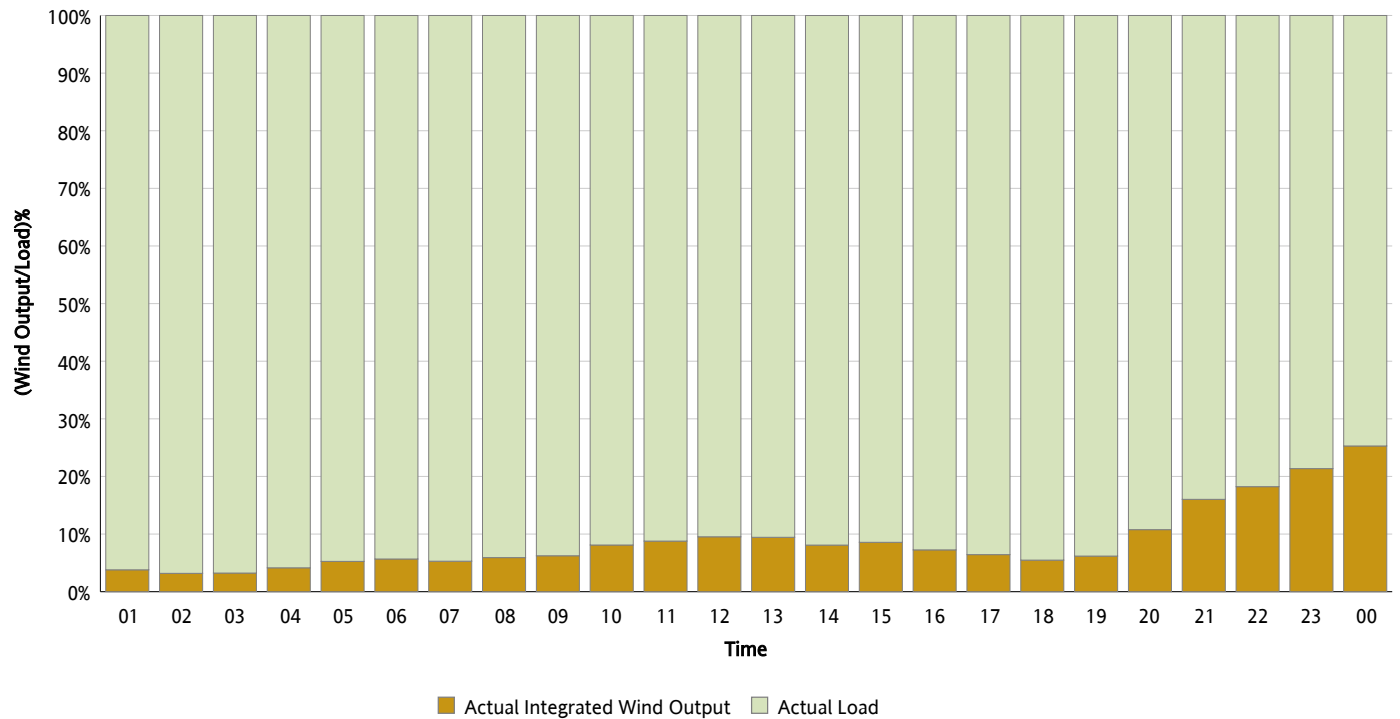
Actual Wind Output as a Percentage of the Total Installed Wind Capacity

01/10/2013



Actual Wind Output as a Percentage of the ERCOT Load

01/10/2013



ERCOT Load vs. Actual Wind Output

01/03/2013 - 01/10/2013

